



# 448

KESHAV DARSHAN

*Varsamedi, Gujarat*



## *the* ENTERANCE

Discover a world of conveniences within your reach, a new lifestyle of unmatched quality and value; ideally situated in Varsamedi. Come discover the home of happiness, come home to new life.









## *the* LOCATION

---

A peaceful location for your Home!  
Location means more conveniences  
nestled in the residential area of  
Varsamed. Keshav Darshan enjoys an  
environment with easy connectivity to  
schools, offices, commercial  
complexes, healthcare establishments,  
restaurants, and hotels.

The location is positively charged with  
all the necessities well ensuring that  
residents don't have to go too far for  
anything. Even if they have to travel,  
Keshav Darshan is well connected to  
the Highway



*Scan Code*

# 448 Varsamed

---





## *The* KESHAV DARSHARN OFFICE

Fusce in nisl vitae massa venenatis rhoncus. Praesent orci velit, lobortis eget, suscipit semper, congue eu, est. Quisque malesuada volutpat enim. Vestibulum leo sem, molestie a, mattis bibendum, feugiat facilisis, nisl. Nam scelerisque odio. Suspendisse fermentum faucibus felis. Praesent pharetra. In consequat felis in

## *The* BIRD'S EYE VIEW

Keshav Darshan is the closest that you can get to a living next to nature. Our garden is the most striking feature of the society with Rides for children's, Making it perfect for Daily Exercise and fun related activities for childrens during their vacation.





“

## *The* SCENERY

The Keshav Darshan offers full  
seclusion from city life and its only  
minutes away from Gandhidham City





## *the* HOME (TYPE A - 750 Sq. Ft)

Relax, Revive and Rejuvenate with amazing Garden in offer for you. This new world of conveniences shall make your life more comfortable

Thoughtfully-designed residences and a society that ensures a healthy and care-free life.

Type A Home has 3 Bedrooms with 3 Attached Bathrooms.

### Amenities



*Drainage*



*Underground Electricity*



*Water Supply*



*Children's Play Area*





Type A - 750 Sq.Ft (Ground Floor)



Type A - 490 Sq.Ft (First Floor)









## *the* HOME (TYPE B - 775 Sq. Ft)

Because Extraordinary Spaces Means extra delight.

Our Homes have been designed to make your living experience one that spells out elegance and exquisiteness. Thoughtfully planned and aesthetically designed, step into homes that are ever-welcoming.

### Amenities



*Drainage*



*Underground Electricity*



*Water Supply*



*Children's Play Area*

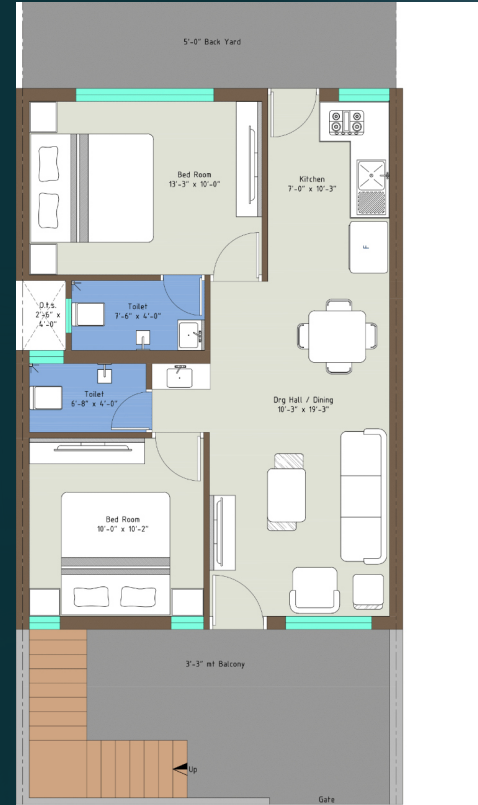




Type B



Type B - 775 Sq.Ft (Ground Floor)





Type B



Type B

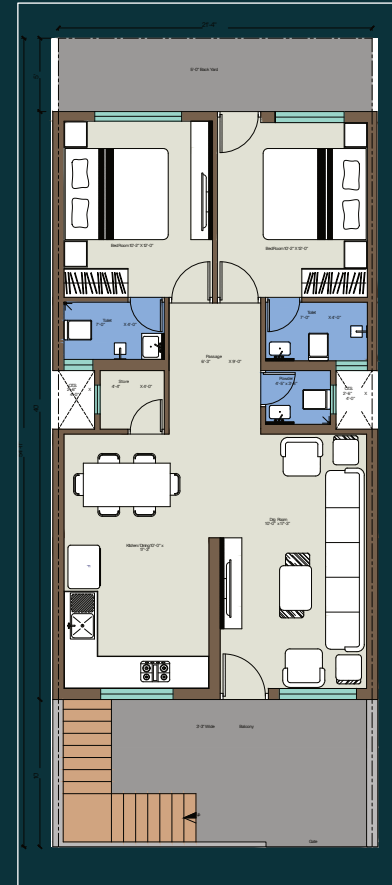




Type C



The Home - Type C - 975 Sq.Ft (Ground Floor)



Our Homes are designed with best precision. We have created this beautiful house while keeping day to day requirements of our customers.

With a wide range of amenities which are provided in our house we are 100% sure that our customers would love it.

## Amenities



Drainage



Underground Electricity



Water Supply



Children's Play Area



Underground Water Tanker



# KESHAV DARSHAN

## 2 & 3 BHK

[WWW.RITIPROPERTIES.COM](http://WWW.RITIPROPERTIES.COM)

9033001535



## VARSAMEDI